



PRAGUE

The Ultimate Survival Guide

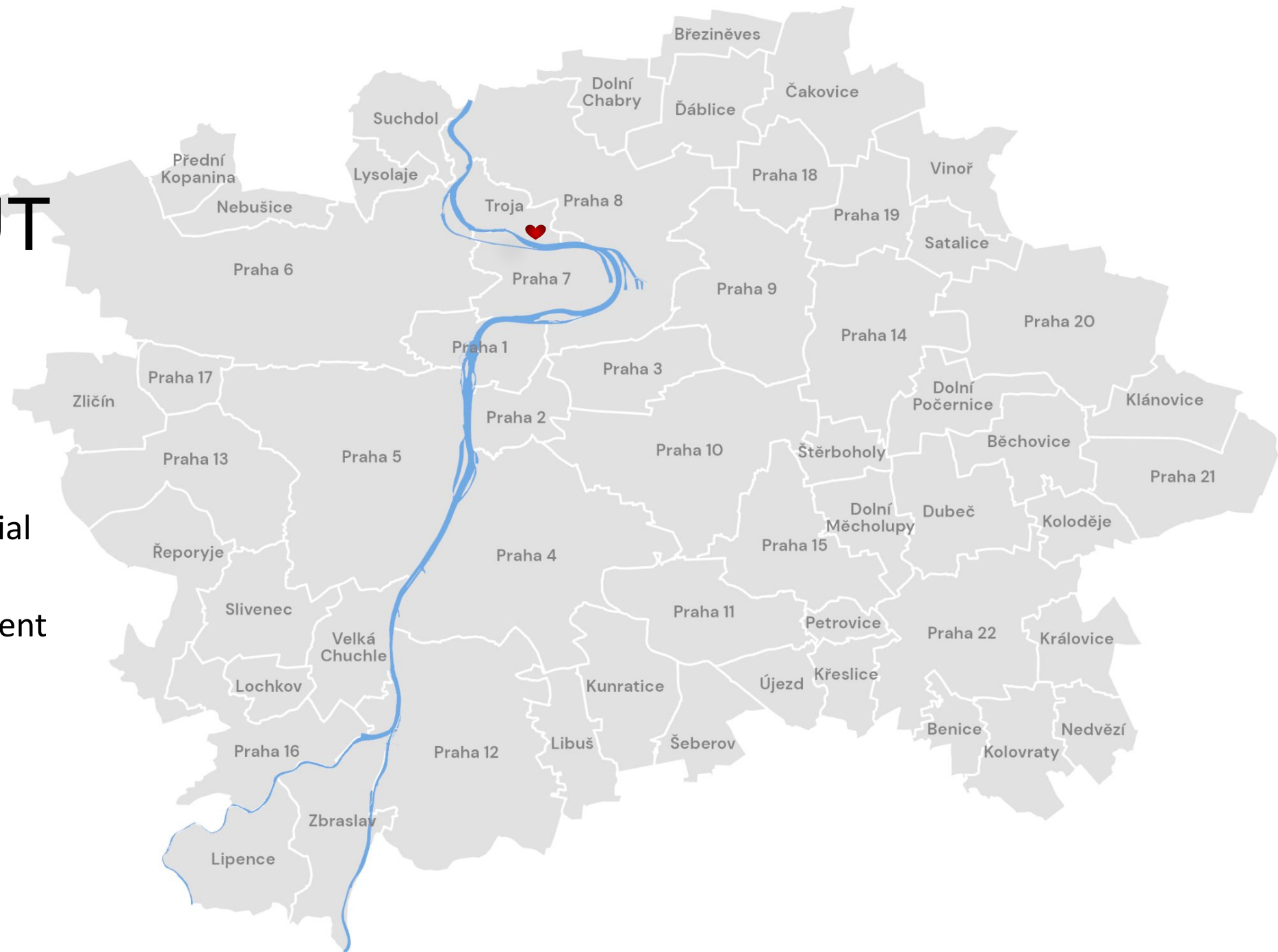
PRAGUE 101

- Capital City of Czech Republic
- „Praha“ in Czech, also known as „City of a Hundred Spires“ or „Mother of all Cities“
- Located on the bank of Vltava river
- Approximately 1.3 million inhabitants, 8 million visitors per year
- The historic centre of Prague (which includes the Old Town, the Jewish Quarter, and the Lesser Town) is listed as a UNESCO World Heritage site since 1992



THE LAYOUT

- 22 districts
- Prague 1- city centre
- Prague 2 - fancy residential area
- Prague 8 - Troja, our current location ❤️





"I see a vast city, whose glory will touch the stars!"

BIT OF HISTORY

- Legend about Prague's founding – princess Libuše's prophecy
- became the seat of the Přemyslid dynasty in the 9th century
- cultural and trade centre during the middle ages
- Importance grew in the 14th century during the reign of Karel IV. – Charles Bridge, St. Vitus Cathedral, and, of course, Charles University
- Unique blend of Gothic, Renaissance and Baroque style



BIT OF HISTORY II.

- More modern influences include art nouveau (Municipal House) and cubism (House of the Black Madonna)
- Prague Spring-> August 1968
- 1989- Wenceslas Square- student protests





MYTHS AND LEGENDS

- Golem- Jewish folklore- Rabbi Löw
- Master Hanuš- builder of the astronomical clock
- Several Prague ghosts: Headless Templar, Murdered Nun

PRAGUE'S TRANSPORTATION SYSTEM

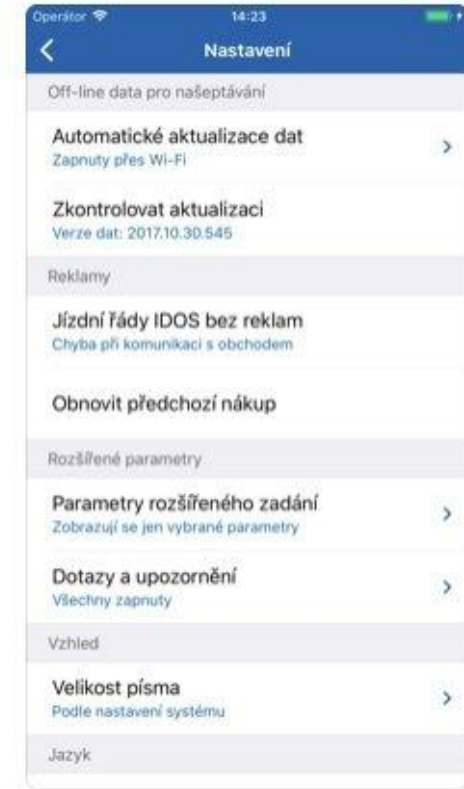
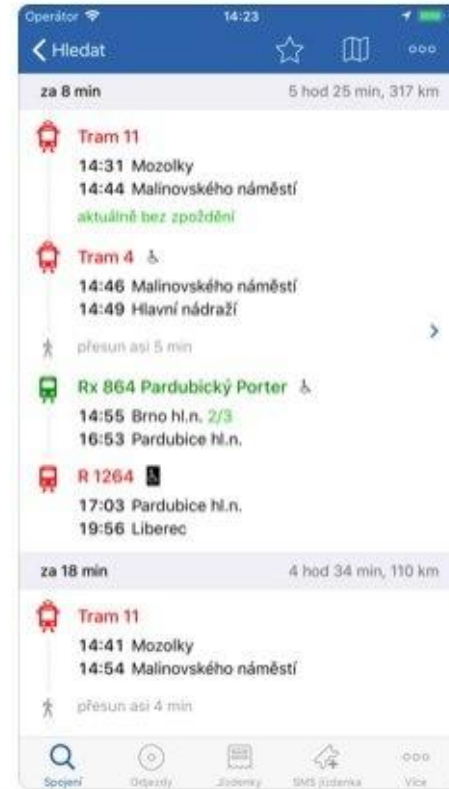
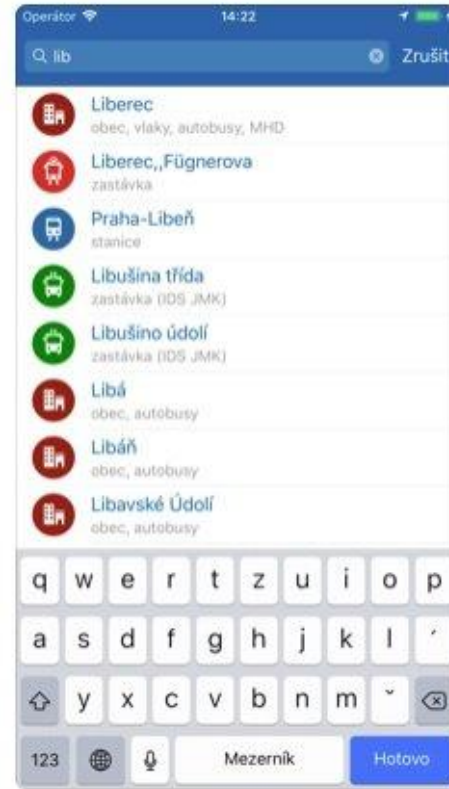
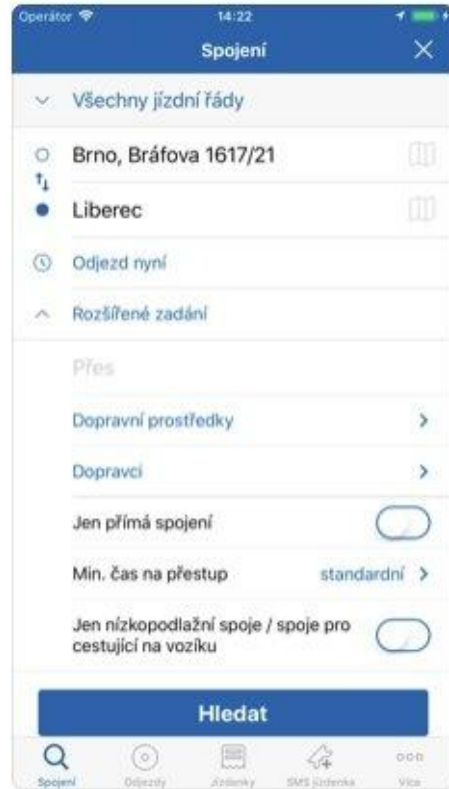




- **Metro**- 3 lines- A, B, C,
3 transfer stations (Můstek, Florenc,
Muzeum), all in the centre
- **Trams**- go mostly through the city
centre
- **Buses**- going to the outskirts, can
get stuck in traffic during rush hour
- City centre is pretty walkable if you
can avoid tourists
- Cycling is not recommended (too
hilly and too many cars). Bike
services: Rekola -
<https://www.rekola.cz/en/>- - 2 rides
for 15 minutes with your travel card
- **Trains** - different railway stations, you
can move within the Prague (for free)
and to other places (for fee)



- Your travel card also allows you to use riverboats on Vltava River
- Find more info on <https://pid.cz/en/riverboats/>
- There is also a funicular that gets you on top of Petřín Hill
<https://pid.cz/en/?s=funicular>
- Night buses (the 900s) and trams (the 90s) are also pretty reliable - but be prepared to bigger intervals
- Uber or Bolt is always an option. Also - electrobikes and kick scooters.

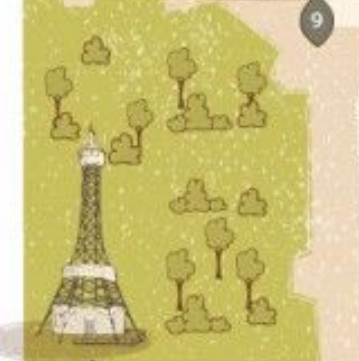
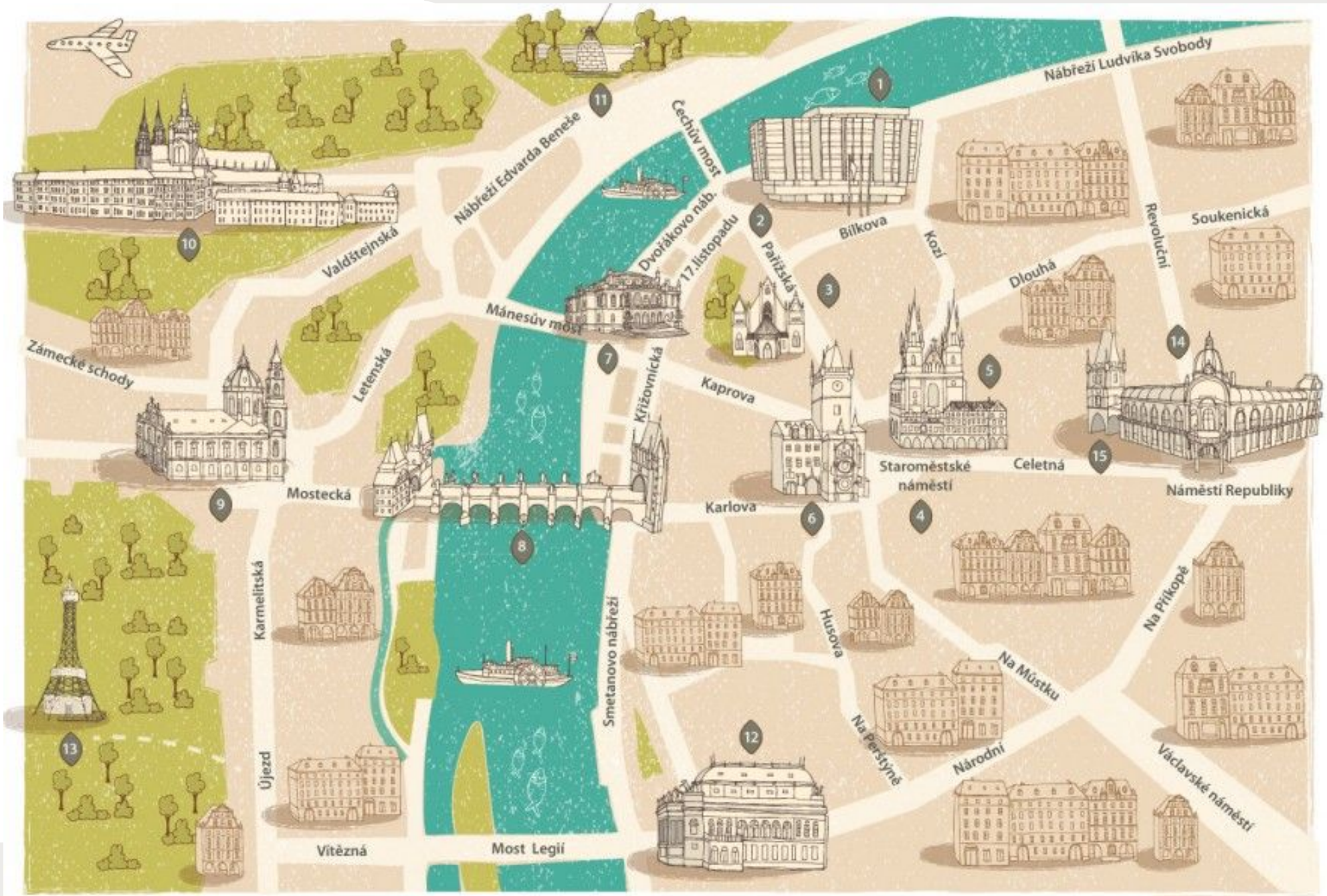


Use **IDOS App** or <https://idos.idnes.cz/pid/spojeni/> for finding out the fastest route from station A to station B

THE BY-NO-MEANS- EXHAUSTIVE LIST OF SIGHTS

1. Old Town Square (Staroměstské náměstí)
2. Wenceslas Square (Václavské náměstí)
3. Jewish Quarter
4. Charles Bridge
5. St. Nicholas Church
6. Prague Castle
7. Petřín Hill
8. Vyšehrad
9. Lennon Wall
10. Square of the Republic with Municipal House
11. and many more.... :)







OLD TOWN SQUARE

How to get there: tram 17 to Právnická Fakulta then walk through Pařížská Street

What to see there: Týnský Church, Old Town Hall with Astronomical Clock

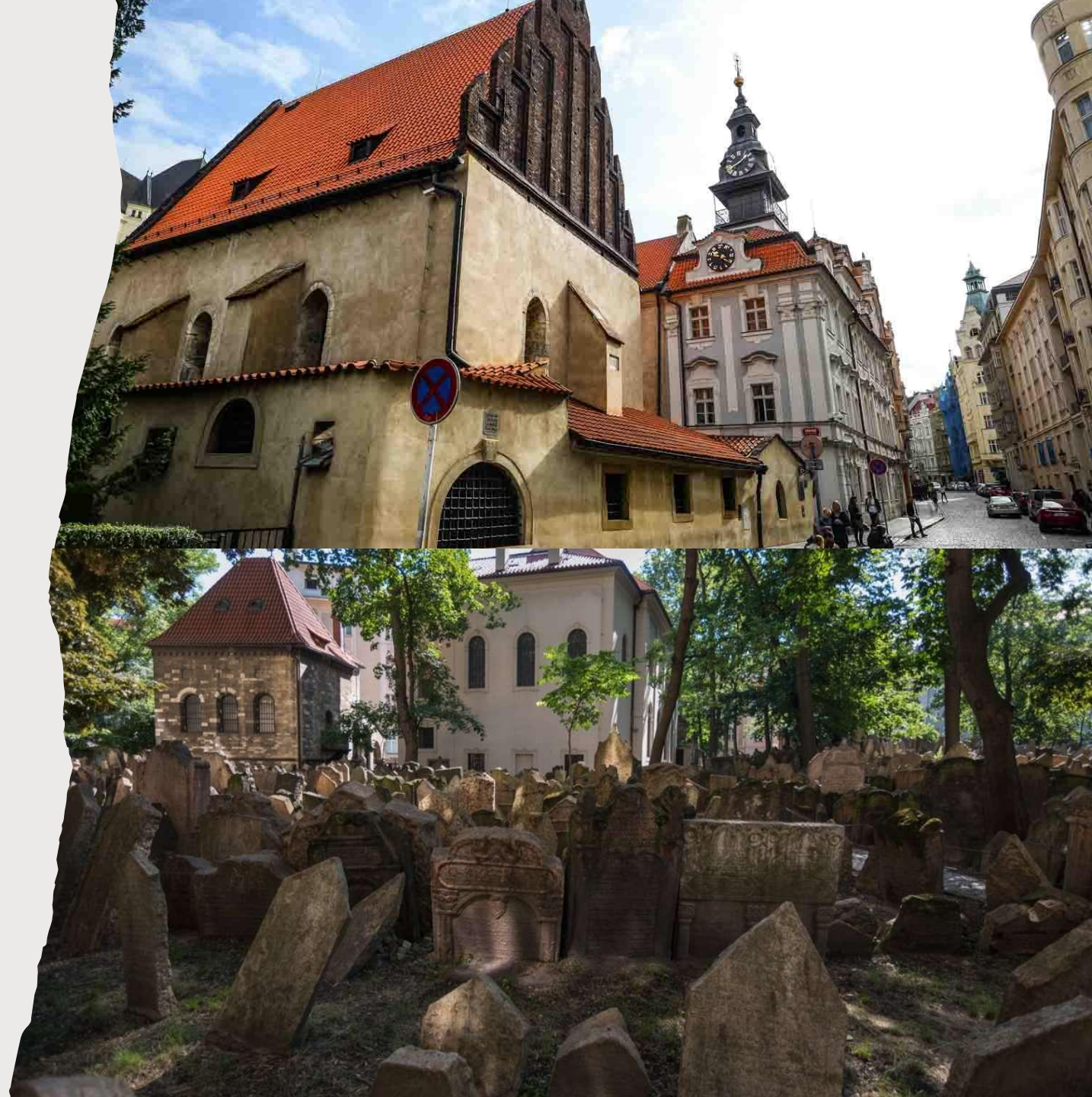
WENCESLAS SQUARE

- **How to get there:** Muzeum stop on the C + A line or Můstek on B + A line
- **What to see there:** Czech National Museum, lots of shops and cafés, Světozor and Lucerna cinemas, largest club in Prague
- Popular spot for protests
- „Pod koněm“ (literally: under the horse)- popular meeting spot for locals



JEWISH QUARTER

- **How to get there:** tram 17 or metro line A to Staroměstská
- **What to see there:** Old-New Synagogue, Pinkas Synagogue-holocaust memorial
- Jewish Museum
- Jewish Cemetery
- Birthplace of Franz Kafka





CHARLES BRIDGE

- **How to get there:** tram 17/metro line A to Staroměstská
- **Tip:** go early in the morning



ST. NICHOLAS CHURCH

- **How to get there:** cross Charles Bridge to get to Lesser Town or get off at Malostranská metro line A stop
- One of the largest baroque churches in Europe, tallest interior in Prague
- former espionage point for the Czechoslovak state security service (StB)

PRAGUE CASTLE

- **How to get there:** take the castle stairs at Malostranská (line A) or tram 22, 23- Pražský Hrad stop
- Largest castle complex in the world
- St. Vitus Cathedral
- Golden Lane





PETRIN HILL

- **How to get there:** tram 15, 20, 12 to Újezd, then walk up or take the funicular
- **Tip:** great view and great place for a picnic



GENERAL TIPS & RECOMMENDATIONS



SHOPPING IN PRAGUE

- Open daily including Sundays
- **Supermarkets**– Lidl, Albert, Billa, Tesco – affordable, Delmart-fancy, Sklizeno – vegetarian, vegan options
- „**Večerky**“ – convenience stores, almost always open
- **Shopping Malls** - Palladium, OC Černý Most, OC Letňany Westfield Chodov, Nový Smichov – clothes shops, cinemas, bookstores, cafés
- **IKEA** - two of them at metro stations Zličín and Černý Most
- Farm markets - generally during the weekends - the most popular is on Naplavka, but there are another ones.
- Sapa- „Little Hanoi“ Vietnamese market, Asian food

CULTURE & EVENTS

- Popular mainstream cinema - CinemaCity (usually in shopping malls, ISIC discount)
- Arthouse cinemas: Atlas, Světozor, Lucerna, Aero, BioOko, Přítomnost – English Screenings
- IFP Kino 35 - French Screenings and different events
- English friendly theatre: Prague Shakespeare Company, Cimrman English Theatre
- **Skautský Institut, Club Celetna** - events, workshops, movie screenings English conversation club, dancing lessons, debate club
- **One World Festival**- a huge festival of documentary films from all around the world, includes Q&A sessions with interesting guests (directors, civil right activists)- at the end of March
- <https://www.oneworld.cz/>





Charles University Debate Club (DKUK)

- One of the few Charles University Club's that is not tied to any specific faculty, 100 % English-friendly
- Weekly debate meetings on Wednesday evenings – British Parliamentary Style (& pub afterwards)
- <https://www.dkuk.cz/en>
- Facebook: <https://www.facebook.com/vsdebata>



MUSEUMS

- Czech National Museum
- Kafka's Museum
- Museum of Prague Ghosts and Legends
- Museum of Communism

GALLERIES

- Kunsthalle- free entry for students
- Veletržní Palác- 20th and 21st century art
- DOX
- Museum Kampa
- GHMP - Gallery of the City of Prague





FOOD & DRINKS

- Mamacoffee, Dobrá Trafika, Kavárna Co Hledá Jméno, lots of „čajovny“- places that serve tea
- Náplavka- embankment of Vltava river, popular student hang-out spot, lots of small bars on boats
- ‘Pivovar u Fleků’ - oldest pub in Prague
- Restaurace U Pinkasů, Hybernia, Potrefená Husa- traditional Czech food
- Quick bite: Bageterie Boulevard, Ugo, Dhaba Beas (40 % discount 1 hour before closing time)



DHABA BEAS

BAGETERIE
BOULEVARD

UGO[®]
SALATERIE



PRAGUE FOR STUDENTS

- **Campus Hybernská**- café & workshops, university WiFi
- **NTK**- National Technical Library in Dejvice (24/7)
- Cafedu
- **Czech Academy of Sciences Library**
- FHS Library, ig: @knihovnavkostce
- ISIC discounts (UGO, BB, bookshops, ČD train service)





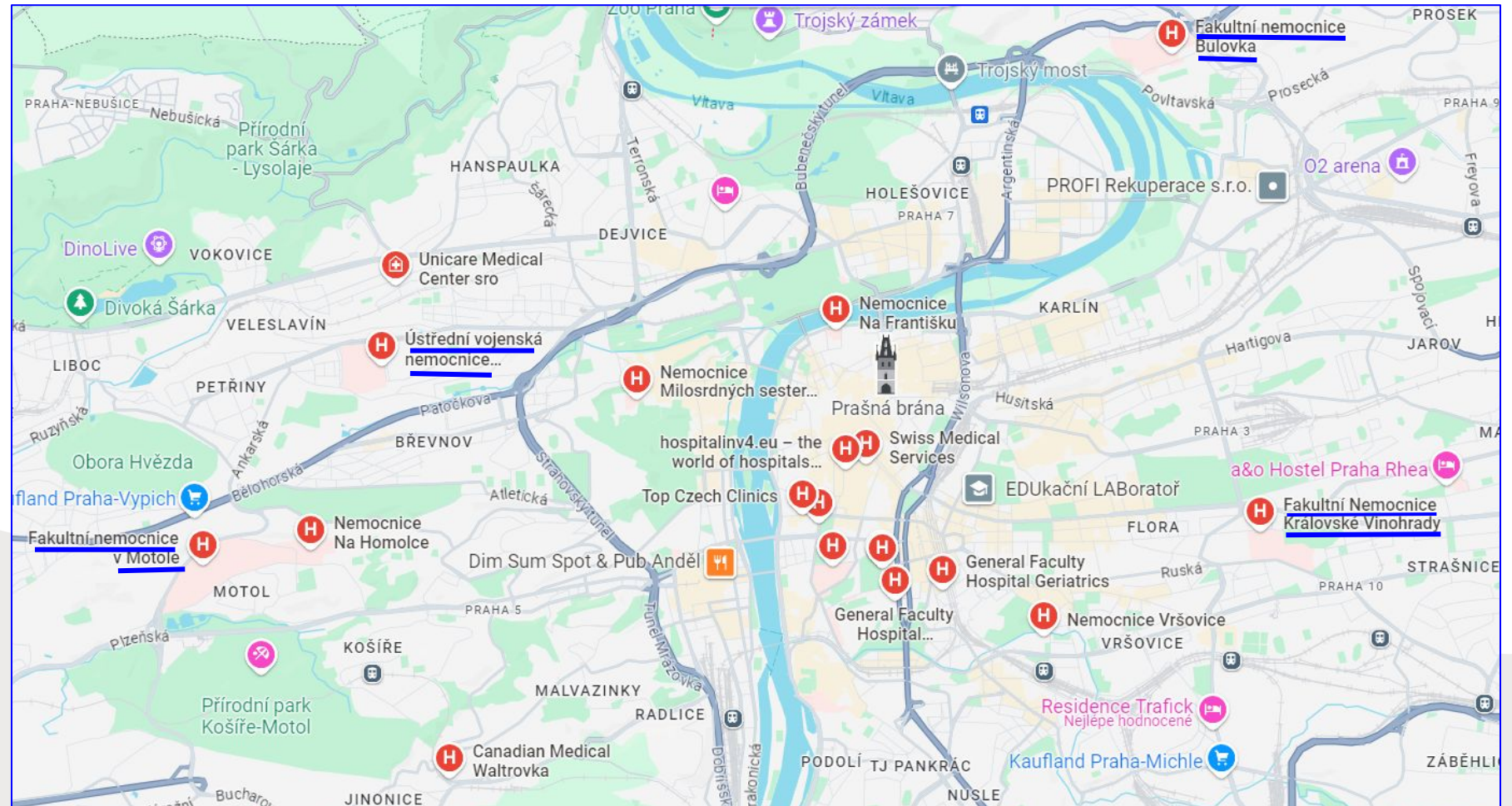
Library of AV CR (Academy of Sciences), Národní
Divadlo (tram 17)
100 CZK for a semester



NTK- National Technical Library,
Dejvická (metro A)

Medical Care

- Fakultní nemocnice v Motole
- UVN
- Fakultní nemocnice Bulovka
- Ordinace Pokorná a Bezdíčková s.r.o.
 - Note: While scheduling an appointment, always mention you are a student of Charles University.





TRÓJA

Where to go near the faculty



- take tram 17 to *Strossmayerovo Náměstí*:
- **Cafés:** Kafe Francin, Ouky Douky, Supernova bakery, Kolektor, Acid Coffee, Osada
- **Restaurants:** Forky's (popular vegetarian burgers), Loving Hut (vegan buffet), Bageterie Boulevard
- **Shopping Mall:** OC Stromovka (supermarket, stationery, food court)- tram 17 to Veletržní Palác
- Cross Club near Nádraží Holešovice (*tram 17 or cross the bridge*)

PARKS NEAR THE FACULTY

- **Stromovka Park** – popular hang out spot (tram no. 17 to Veletržní Palác)
- **Letná Park** (from Strossmayerovo náměstí - stop Letenské náměstí or Sparta)





SIGHTS NEAR THE FACULTY

- Bus no. 112 from *Povltavská* or *Trojská* bus stop near our faculty to *Zoologická Zahrada* stop
- Prague Zoo
- Prague Botanical Garden
- Troja Castle (*underrated!*)



USEFUL LINKS

- Honest Guide youtube channel:
<https://youtube.com/@HONESTGUIDE>
- Like a local guide:
<https://www.likealocalguide.com/prague>
- Use It travel guide
<https://www.use-it.travel/cities/detail/prague/>
- Foodie map (paid):
<https://www.tasteofprague.com/prague-foodie-map>
- Gastromapa: <https://gastromapa.hejlik.cz>
- Events: <https://www.kudyznudy.cz>

