
Orientation Programme

Getting ready

[ARRIVAL INFORMATION SHEET](#)

[BUDDY PROGRAMME](#)

[ORIENTATION PROGRAMME](#)

[FHS INTERNATIONAL STUDENTS on FACEBOOK](#)

Arrival Information Sheet

At the beginning of the semester all incoming non-degree (exchange) international students are expected to participate in the compulsory ORIENTATION Programme organized by the International Office of the Faculty of Humanities. The prospective students are provided with **the FHS arrival information sheet** via e-mail well in advance.

[FHS Arrival Information Sheet SUMMER Term of 2018/19](#)

CU Buddy Programme

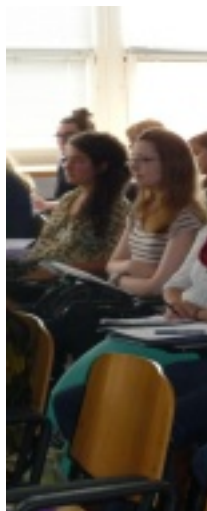
In addition to the assistance provided by the International Office during the Orientation Programme, the new incoming international students have an opportunity to get a BUDDY - a local student who can meet them on their arrival, accompany them to their accommodation, help you get familiarised with life in Prague, answer various questions regarding your stay in the Czech Republic in general etc.

Organised by [ESN CU Prague](#), the Buddy Programme aims to link international and home students by providing exchange students with a helping hand for an easier start to your stay, while also giving Czech students an opportunity to practise a foreign language and meet new people.

Orientation Programme at the FHS, CU

During the first week of the semester, before teaching commences, the FHS International Office organizes the **Orientation Programme** to welcome new non-degree (exchange) international students to Prague and to CU.

Along with a range of information sessions introducing the students into academic as well as cultural issues related to their study abroad stay, the students are assisted in arranging some of the practical issues, such as a Charles University International Student Card (which allows access into the Student Information System, CU facilities, and Internet within CU facilities), a travel pass for the Prague public transport, and access to FHS CU facilities.



- registration and welcome at FHS (CU International Student ID Card) & get to know each other
- practical arrangements to get settled in Prague (FAQ)
- CU Facilities (library and the Jinonice campus tour)
- study plan and the instructions on course registrations
- administrative arrangements (FAQ) + paperwork
- practical workshop on using the online Student Information System (SIS)
- cultural orientation session and welcome party

International Students on Facebook

Accepted international students can join us on [Facebook](#) in the [group International students FHS CU](#) to get in touch with the other students coming for their studies at FHS or to contact students from previous semesters who may give you some useful tips.